

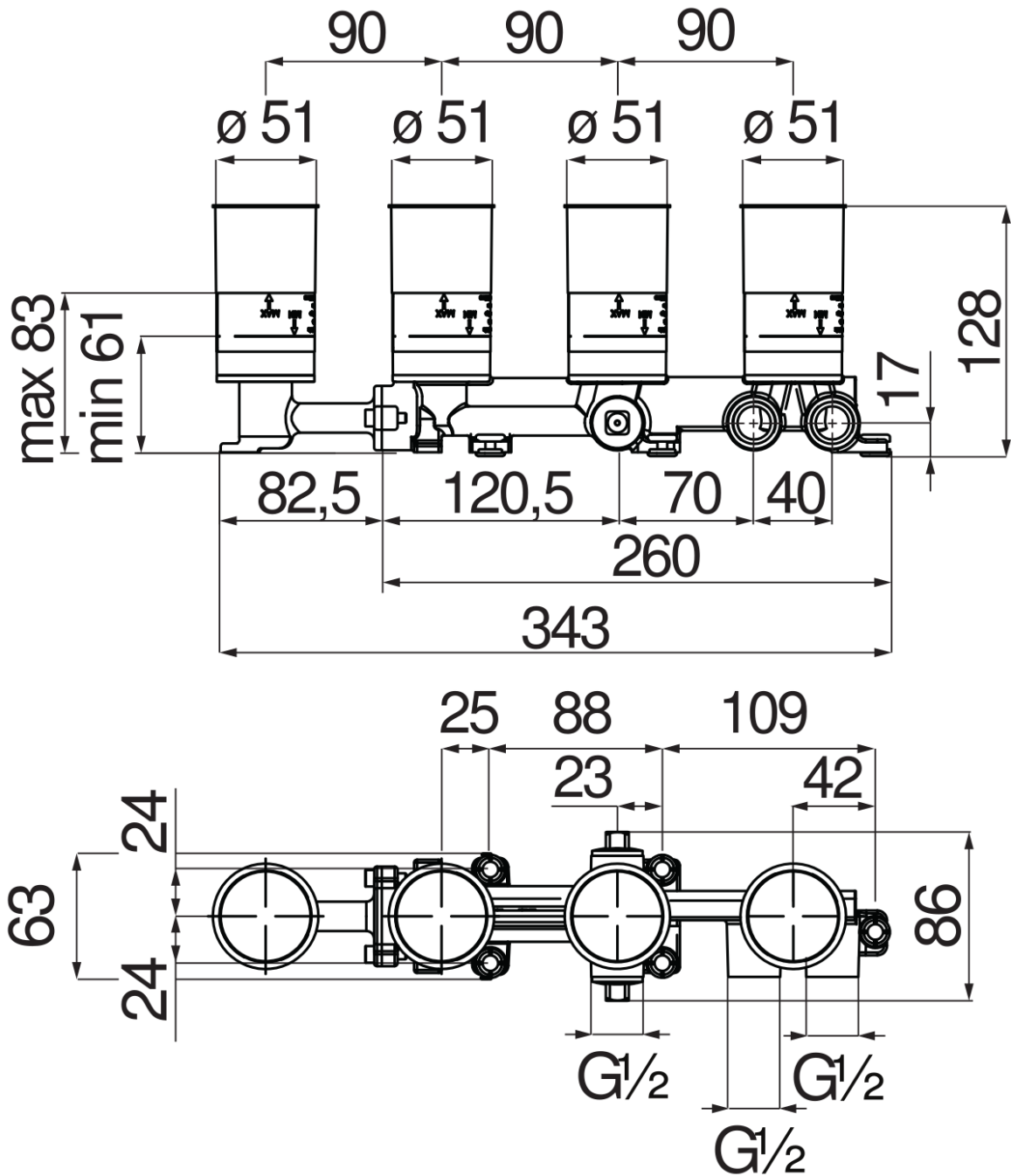


SPECIFICATIONS

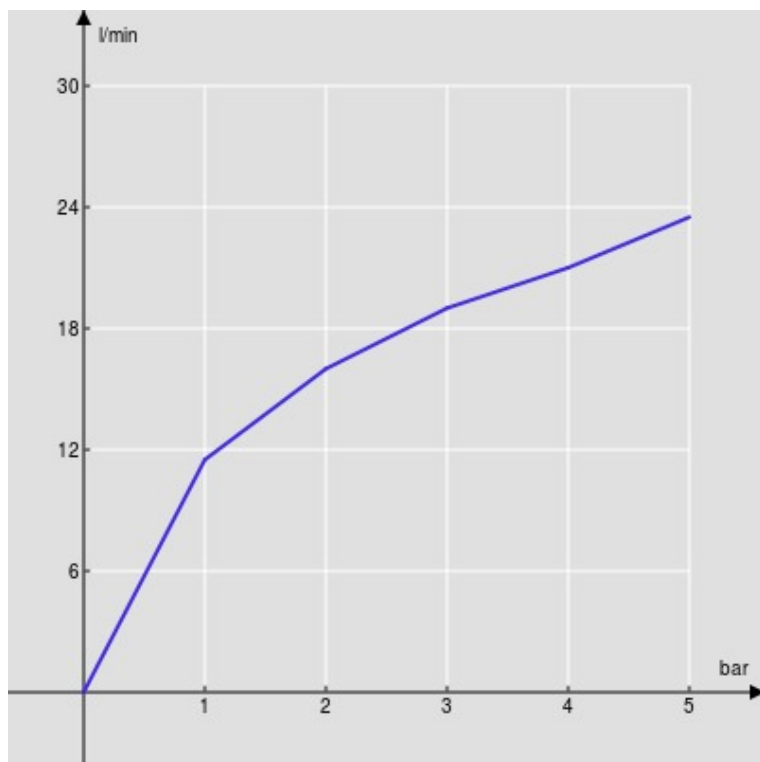
Required flush-fit part

Ø 1/2" water inlet and outlet

Packaging: 36 x 10,4 x 13,4 cm / 0,00502 m³ / 2,14 kg

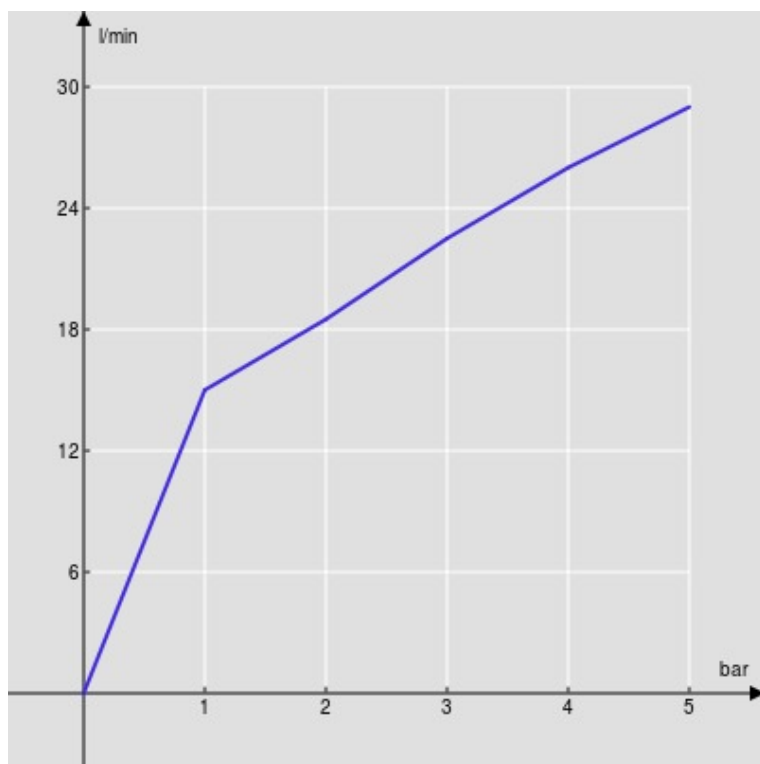


FLOW RATE DIAGRAM: HOT/COLD WATER



— Aerator

FLOW RATE DIAGRAM: MIXED WATER



— Aerator